

# PHOTOFACT®

TRADE NAME : Lafayette Model HE-15B  
SUPPLIER : Lafayette Radio Corp.  
111 Jericho Turnpike, Syosset, L. I., N. Y.  
TYPE SET : 6 Tube 8 Channel Transceiver  
POWER SUPPLY : 110-120 Volts AC, 60 Cycles (or)  
6 (or) 12 Volt Storage Battery  
RATING: (Rec.) 42 Watts, .4 Amp. @ 117 Volts AC  
(Trans.) 45 Watts, .41 Amp. @ 117 Volts AC  
TUNING RANGE: Any 8 CB Channels 1 thru 22  
(Receiver is continuously tuned)



## ALIGNMENT INSTRUCTIONS

### Suggested Alignment Tools:

A1, A2, A3, A4.....GENERAL CEMENT #5097, 8727..... WALSCO #2515  
A8..... GENERAL CEMENT #5000, 5003, 5066.... WALSCO #2525, 2528

### RECEIVER ALIGNMENT

Connect output meter across voice coil.

SIGNAL GENERATOR	CHANNEL	ADJUST	REMARKS
High side thru .01mfd to pin 9 (grid) of Mixer, low side to ground. ( 455KC Mod. )	Any	A1, A2, A3, A4	Adjust for maximum output.
High side to antenna receptacle thru .1mfd, low side to ground. Tune to channel frequency.	Highest Channel Used.	A5, A6, A7	Adjust for maximum output.
A8 is adjusted for minimum interference on the lower 3 TV Channels.			

### TRANSMITTER ALIGNMENT

ONLY THOSE PERSONS PROPERLY LICENSED ARE PERMITTED TO MAKE REPAIRS OR ADJUSTMENTS WHICH MAY RESULT IN ILLEGAL OPERATION. ( REFER TO FCC RULES & REGULATIONS PART 19, SUBPART D, SECTION 19.71 )

INDICATOR	ADJUST	REMARKS
RF Power indicator lamp on front panel.	A9	Key transmitter. Adjust for maximum brilliance.
"	A10, C42	Turn C42 completely tight, then back off 1/2 turn. Adjust A10 for maximum brilliance (or minimum dip on IP meter inserted in front panel jack.
"	C42	Adjust for maximum brilliance (or minimum dip on front panel IP meter).

Press and release transmit button several times. The output indicator should show that the transmitter is operating each time. If not, back out A9, 1 1/2 turn at a time until transmitter operates each time the button is depressed.

LAFAYETTE MODEL HE-15B

HOWARD W. SAMS & CO., INC. Indianapolis 6, Indiana

## PARTS LIST AND

## FIXED CAPACITORS(cont)

ITEM No.	RATING	REMARKS	REPLACEMENT DATA					
			AEROVOX PART No.	CENTRAL PART No.	CORRELL-DUBILIER PART No.	ELMENCO PART No.	MALLORY PART No.	SPRAGUE PART No.
C37	.001 2000V 10%		BPD-01	DD-103	BYA1081	CCD-103	B-110	5HK-S10
C38	.001 2000V 10%		NPO-D1 10	DTZ-10	C10QC	CCTO-100	CNO-410	10TCC-Q10
C39	.001 2000V 10%		NPO-S1 2.2	TCZ-2.2	C10V23C		CNO-212	10TCC-V22
C40	10 NPO							
C41	2.2 NPO 5%	#2051-5						
C42	.001		BPD-001	DD-102	BYA10D1	CCD-102	B-120	5HK-D10
C43	.001		EYD-.02	DD-203	BYB6S2	CCD-203	B-210	5HK-S20
C44	.002							

\* Not normally in distributor's stock. Available thru distributor on order to manufacturer.  
Note 1. Not used in some versions. # Lafayette Part Number. † Alternate Value.

CENTRALAB  
PART No.

R1	Volume & Switch	Imeg	V-329-3	B-70-S	A-47-Imeg-Z, FS-S, SWE-Z0	Q19-137, 76-2	U-53, US-27
R2	Squelch	Imeg	V-330-3	B-70	A-47-Imeg-Z	Q19-137	U-53

[illegible]

R31	5000Ω 5W	PW5-5000	5W-SQ-5000		R32	330Ω 5W	PW5-330	5W-SQ-330
-----	----------	----------	------------	--	-----	---------	---------	-----------

## COLIC (DE IE)

ITEM No.	USE	REPLACEMENT DATA					NOTES
		Layavette	MERIT PART No.	MILLER PART No.	STANCOR PART No.	WORKMAN PART No.	
L1	TV Trap	①					① 7 Turns #36 Wire
L2	Rf Bandpass	180-4	TV-118	6171-A	RTC-8609	T216	② Battery versions only.
L3	Rf Bandpass	180-2					
L4	Rec. Oscillator	180-1					
L5	1st IF	1-110-4					
L6	2nd IF	1-110-1					
L7	Trans. Osc. Plate	180-2	TV-118	6171-A	RTC-8609	T216	
L8	Final Flash Choke	190-5 ②					

**TRANSCOMPRED (POWER)**

ITEM No.	RATING			REPLACEMENT DATA					NOTES
	PRI.	SEC. 1	SEC. 2	Ladyette Part No.	MERIT Part No.	STANCOR Part No.	THORDARSON Part No.	TRIAD Part No.	
T1	117VAC @ .4A	110VAC @ .4A	6.3VAC @ 2.3A	P.T-178-3					* .65 A in Transmit

PARTS LIST AND DESCRIPTION (CONTINUED)

CHASSIS—TOP VIEW

TRANSFORMER (AUDIO OUTPUT)

ITEM No.	IMPEDANCE		REPLACEMENT DATA				NOTES
	PRI.	SEC.	Lafayette PART No.	MERIT PART No.	STANCOR PART No.	THORDARSON PART No.	
T2	5200Ω	3-4Ω	T-179-2		A-3817		
	Tap @ 90%						

SPEAKER

ITEM No.	TYPE	REPLACEMENT DATA		NOTES
		Lafayette PART No.	QUAM PART No.	
SP1	4" PM 3-4Ω	S-719-1	3A05	

FUSES

ITEM No.	TYPE	RATING	REPLACEMENT DATA					
			Lafayette PART No.		LITTELFUSE PART No.		BUSS PART No.	
			FUSE	HOLDER	FUSE	HOLDER	FUSE	HOLDER
M1	3AG	1A 250V	①		318001		GJV-1	
	3AG	10A 32V	②		312010 (3AG 10A 32V)	155020	AGC-5	HDJ

① AC Operation. ② DC Operation.

MISCELLANEOUS

ITEM No.	PART NAME	Lafayette PART No.	NOTES
M2	Tuning Capacitor	V-235-1	
M3	Switch		Receiver Tuning Channel Selector (Rotary Wafer Type)
M4	Switch		Receiver-Transmit (Spring Loaded, Rotary Wafer)
M5	Crystal		Transmit (Order by channel desired)
M6	RF Power Indicator		Neon Lamp (NE-2)

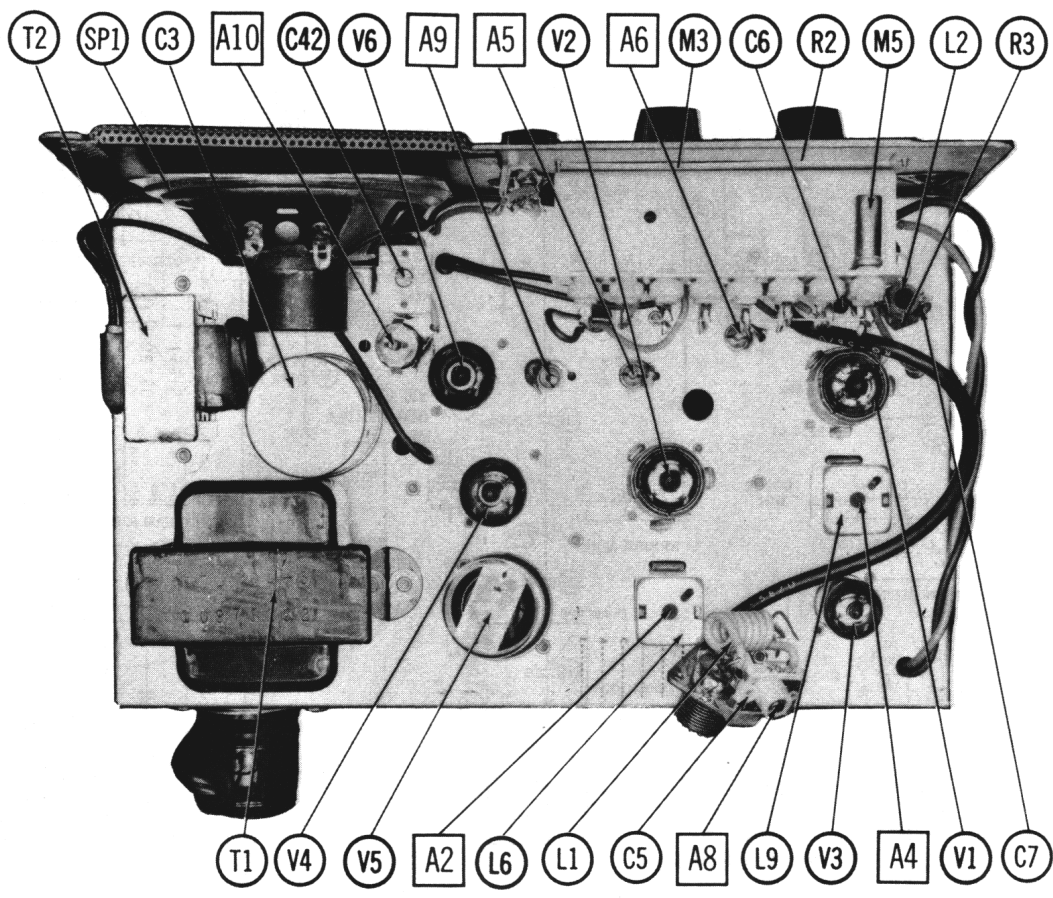
VIBRATOR

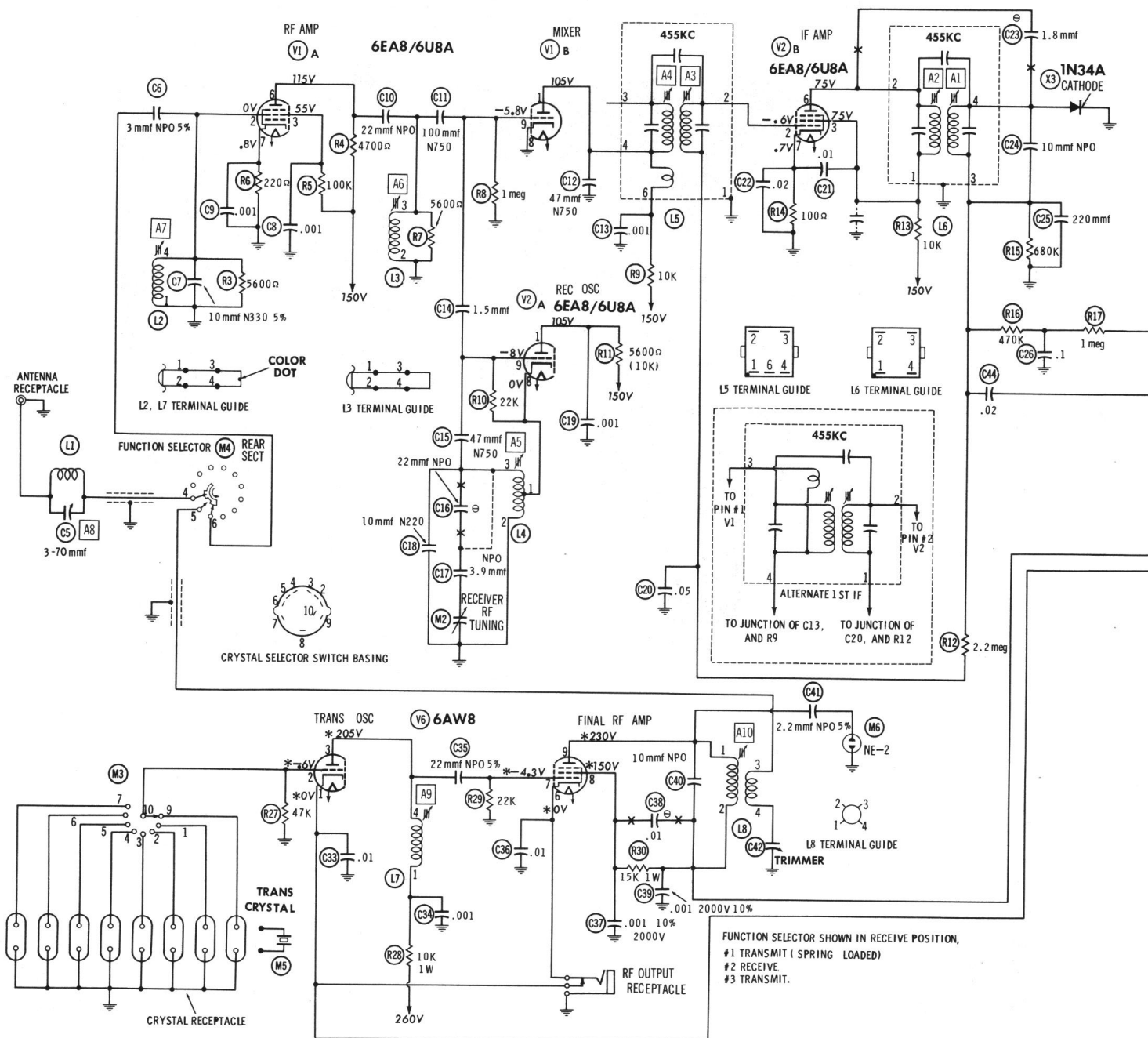
ITEM No.	TYPE	INPUT VOLTS	FRE-QUENCY	REPLACEMENT DATA			NOTES
				Lafayette PART No.	CORNELL-DUBILIER PART No.	MALLORY PART No.	
	Interrupter	6, 3	115%		5301	1601	6 Volt Versions
	Interrupter	12, 6	115%		6301	G-1601	12 Volt Versions

WIRING DATA

General-use Hook-up Wire . . . . .	Use BELDEN No. 8530 (Solid) Available in 12 Colors
Shielded Antenna Lead . . . . .	8524 (Stranded) Available in 12 Colors)
Lowest Loss (RG-8/U Type)	8214
Low Loss (RG-8/U)	8237
Miniature (RG-58/U)	8240 (Solid)
Miniature (RG-58/U)	8259 (Stranded)
Single Conductor Shielded (Neoprene)	8498
Single Conductor Shielded (Vinyl)	8498
Series Spark-Plug Sets	7300-Series
Bonding Strap . . . . .	Use BELDEN No. 8661 (3/8 in.)

LAFAYETTE MODEL HE-15B





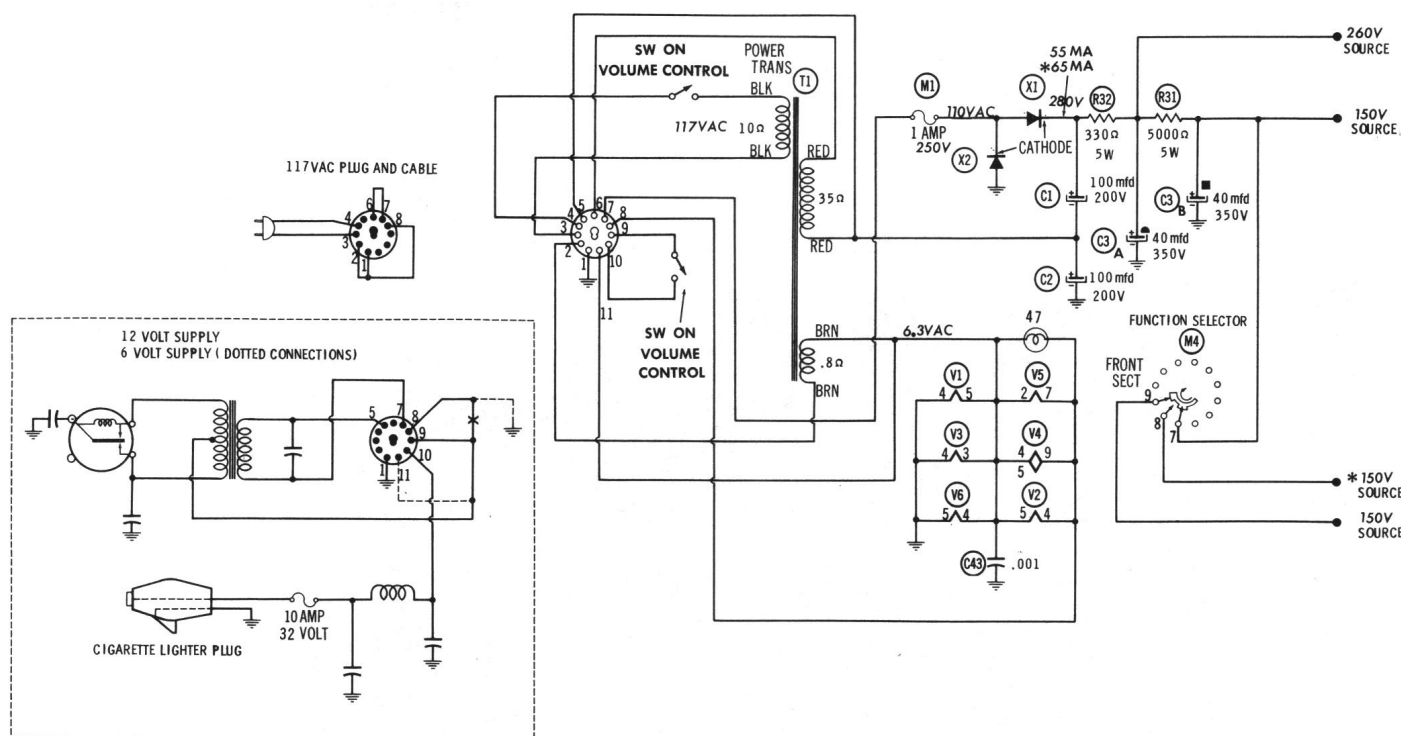
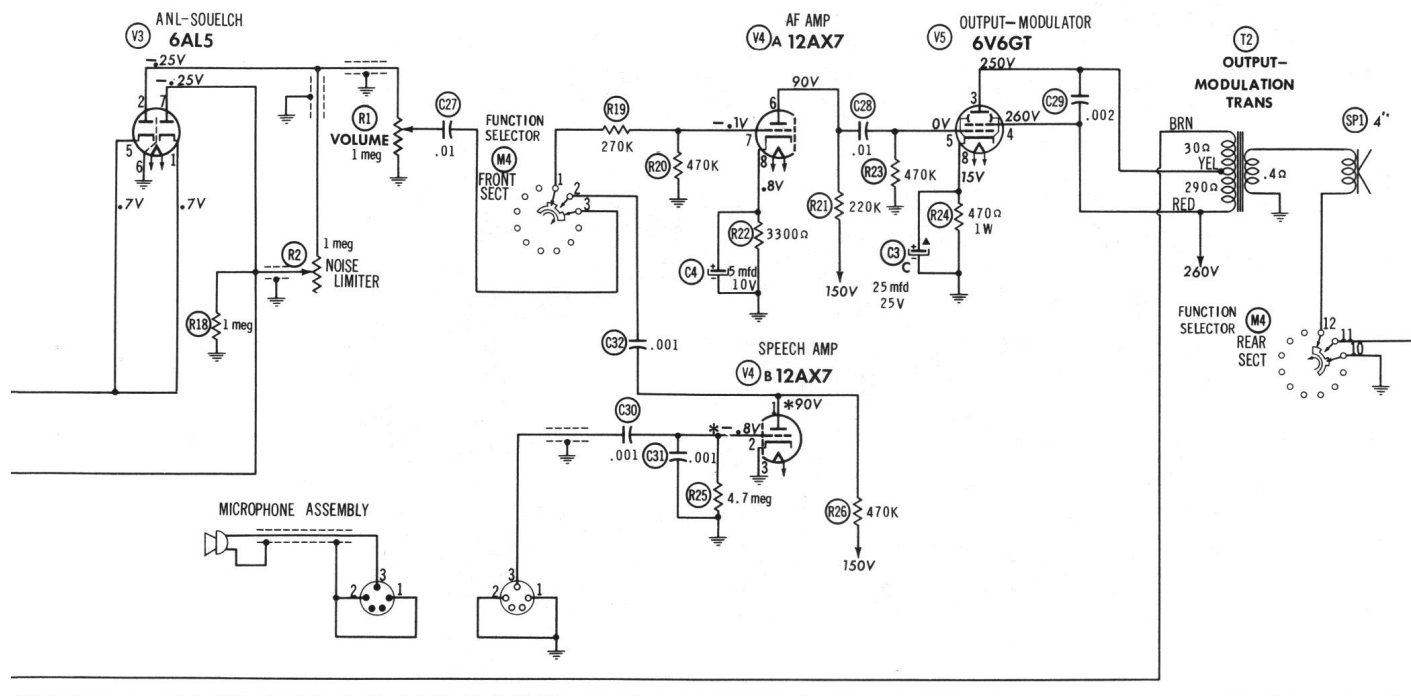
RESISTANCE READINGS

ITEM	TUBE	Pin 1	Pin 2	Pin 3	Pin 4	Pin 5	Pin 6	Pin 7	Pin 8	Pin 9
V1	6U8A 6E8A	†15K	0Ω	†100K	FIL	FIL	†10K	220Ω	0Ω	1 meg
V2	6U8A 6E8A	†15K	2.3 meg	†15K	FIL	FIL	†15K	100Ω	0Ω	22K
V3	6AL5	2 meg	1 meg	FIL	FIL	2 meg	0Ω	1 meg		
V4	12AX7	*†475K	4.7 meg	0Ω	FIL	FIL	†230K	470K	3300Ω	FIL
V5	6V6GT	0Ω	FIL	†500Ω	†300Ω	470K	TP	FIL	470Ω	
V6	6AW8A	*0Ω	*47K	†10K	FIL	FIL	*0Ω	22K	†650Ω	†15.6K

†

MEASURED FROM OUTPUT OF X1.  
MEASURED IN TRANSMIT POSITION.

- ⊖ See parts list for alternate value or application.  
1. Voltage measurements taken with vacuum tube voltmeter.  
2. All controls set for normal operation, no signal applied.  
3. Measured values are from socket pin or terminal to common ground.  
4. All terminals viewed from bottom unless otherwise designated.  
5. Numbers assigned to terminals may not be found on the unit.  
6. Supply voltage maintained at rated value for voltage readings.



LAFAYETTE MODEL HE-15B

